

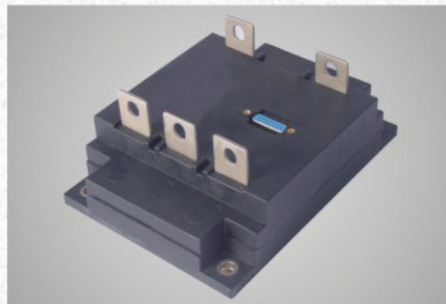
Intelligent Three-phase Rectifier Module (three-phase rectifier voltage-regulation, various protections)

Introduction

The product is a multi functional power-integrated module which is encapsulated together by thyristor power circuit, phase-shift trigger control circuit, signal-check circuit, PI modulation circuit, feedback circuit and protection circuit etc. It has realized miniaturization, modularization and intellectuaization of three-phase voltage regulation equipment.

Features

- Non-phase ordered demand
- Protection function for over current, over heat and lack phase
- Steady voltage and current circuit with linear control
- German glass passivation chips
- 'ZKH' vacuum welding technology, high quality and long life
- Hand, meter adjustment and computer control
- Special IC, SMT circuit board, high frequency trigger transformer, RTV seal, super stability and reliability
- German DCB ceramic plate, $V_{ISO}=2500V$, small thermal resistance and super thermal conductivity
- Particular 'KCF' structure design, small size, light weight, easy to install



Applications

- Excitation power supply
- Various power supplies
- Battery charge and discharge
- AC / DC motor
- Temperature adjustment and control
- Steady voltage, constant current system

| Model | Max. output Current A_{RMS} | Operating voltage V_{AC} | Control voltage V_{DC} | Control current mA_{DC} | Bottom temp. $^{\circ}C$ | Outline |
|------------|-------------------------------------|----------------------------------|--------------------------------|---------------------------------|--------------------------------|---------|
| SGITR1-50 | 3×50 | 480 | ± 12 | ≤ 400 | ≤ 80 | WM22 |
| SGITR1-75 | 3×75 | | | | | |
| SGITR1-100 | 3×100 | | | | | |
| SGITR1-180 | 3×180 | | | | | |
| SGITR1-250 | 3×250 | 480 | ± 12 | ≤ 400 | ≤ 80 | WM23 |
| SGITR1-300 | 3×300 | | | | | |
| SGITR1-550 | 3×550 | | | | | |
| SGITR1-800 | 3×800 | | | | | |

Circuit Configuration

